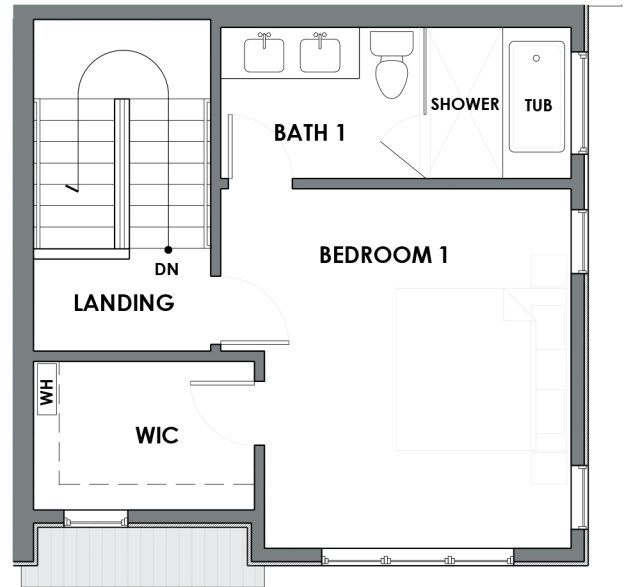


GILMAN PARK TOWNHOMES - PHASE III

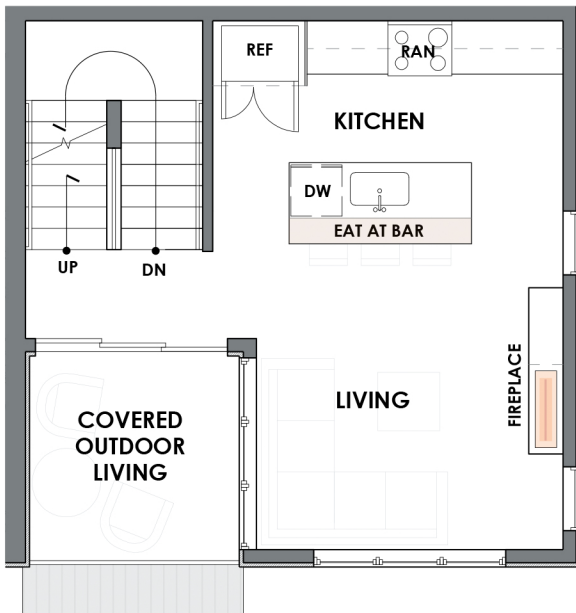
TH 5

848 NW 54th St

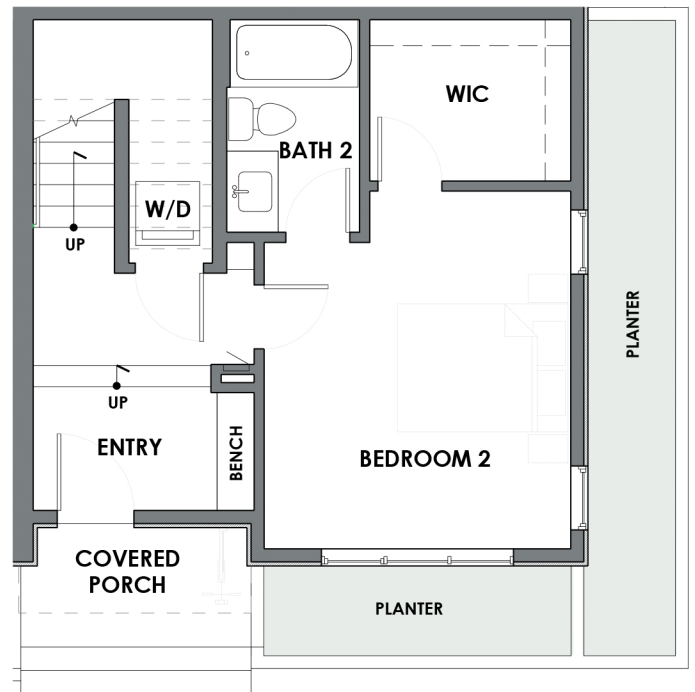
2 Bed/2 Bath
1,301 Sq Ft
Covered Deck
Off-Street Parking



TH 5- Level 3



TH 5 - Level 2



TH 5 - Level 1

Seller reserves the right to modify or change plans, specifications, features, and prices without warning. Floor-plans, site plans, maps, and renderings may not be to scale. Interior surveyed square footage may vary from architectural square footage calculations.



OLSEN ANDERSON


Windermere
REAL ESTATE

Jed Kliman | 206-778-7665
jkliman@windermere.com