

# GILMAN PARK TOWNHOMES - PHASE III

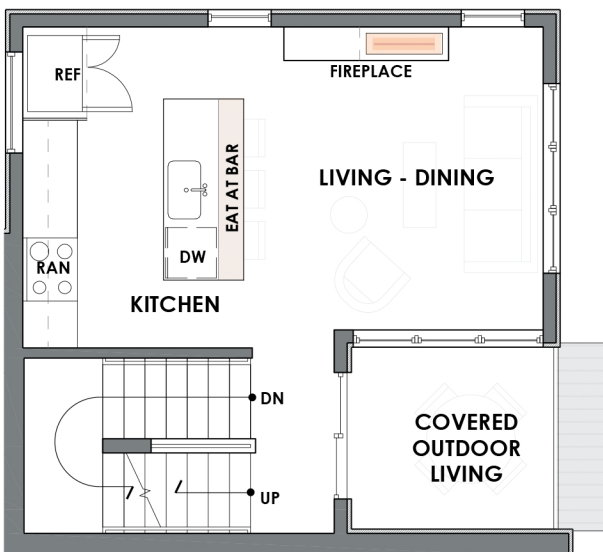
## TH 4

5400 9th Ave NW

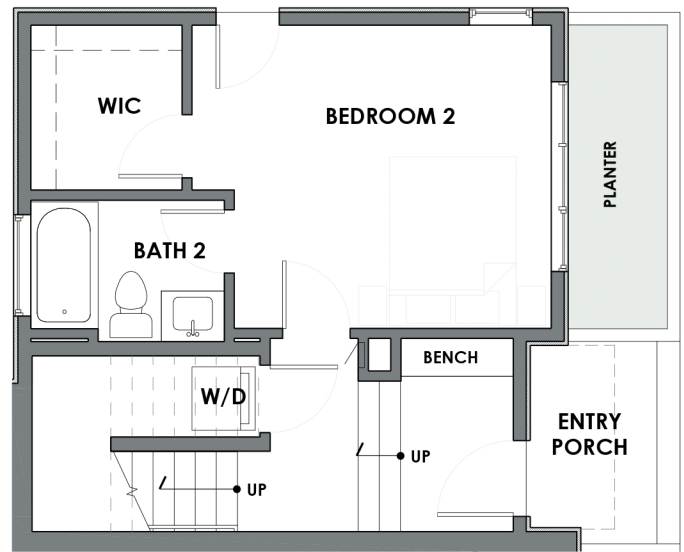
2 Bed/2 Bath  
1,390 Sq Ft  
Covered Deck



TH 4 - Level 3



TH 4 - Level 2



TH 4 - Level 1

Seller reserves the right to modify or change plans, specifications, features, and prices without warning. Floor-plans, site plans, maps, and renderings may not be to scale. Interior surveyed square footage may vary from architectural square footage calculations.



OLSEN ANDERSON

  
**Windermere**  
REAL ESTATE

Jed Kliman | 206-778-7665  
jkliman@windermere.com