

GILMAN PARK TOWNHOMES - PHASE II

TH 1

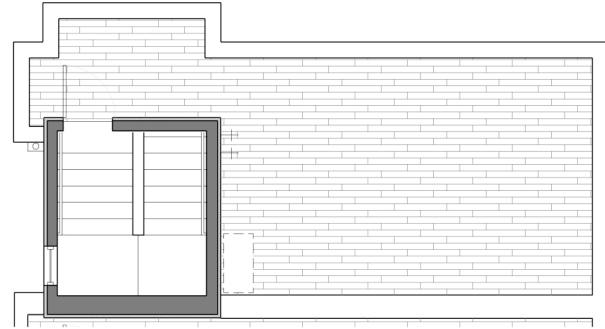
851 NW 54th St

3 Bed/2.75 Bath

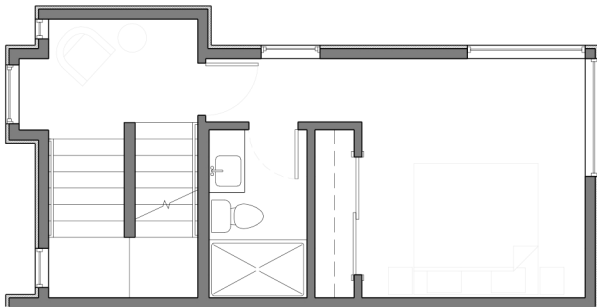
1,568 Sq Ft

Roof Deck

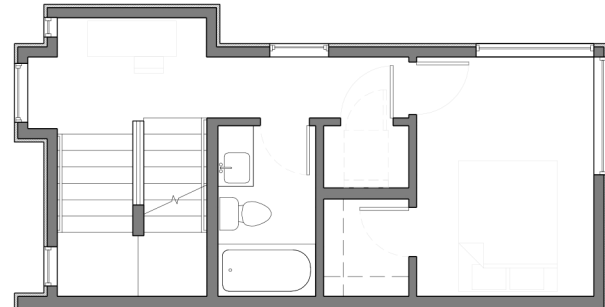
Off-Street Parking



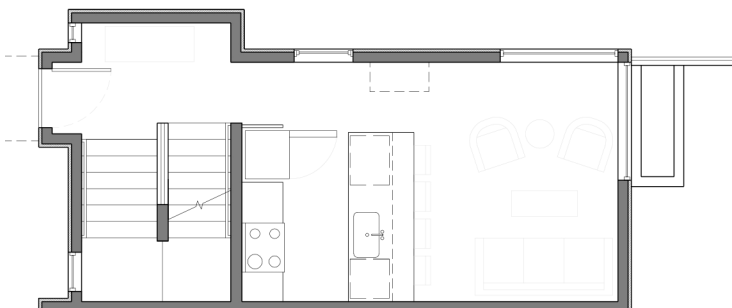
TH 1 - Roof



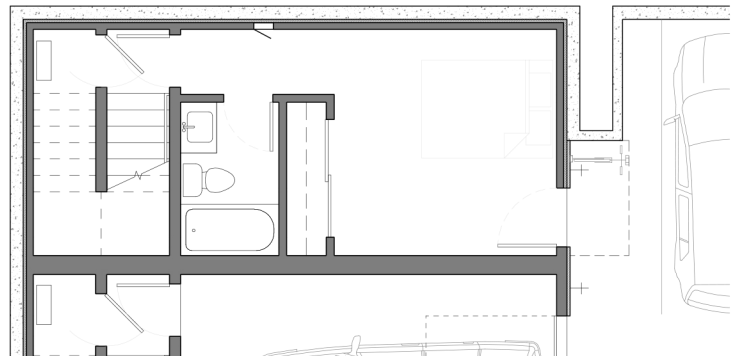
TH 1 - Level 3



TH 1 - Level 2



TH 1 - Level 1



TH 1 - Level 0

Seller reserves the right to modify or change plans, specifications, features, and prices without warning. Floor-plans, site plans, maps, and renderings may not be to scale. Interior surveyed square footage may vary from architectural square footage calculations.



OLSEN ANDERSON


Windermere
REAL ESTATE

Jed Kliman | 206-778-7665
jkliman@windermere.com