

GILMAN PARK TOWNHOMES

TH2

5318 9th Ave NW

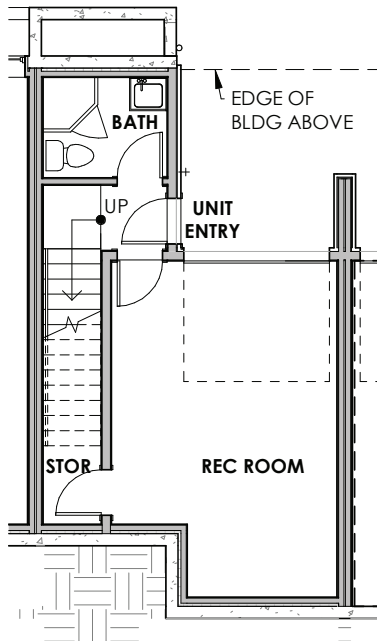
2 Bedrooms + Den

3 Baths

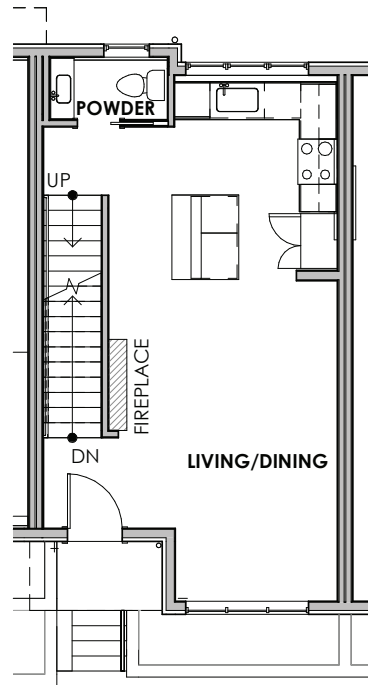
Rec Room

1,963 Sq Ft

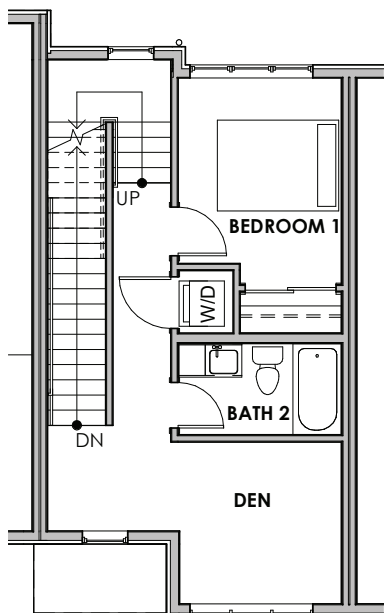
Roof Deck



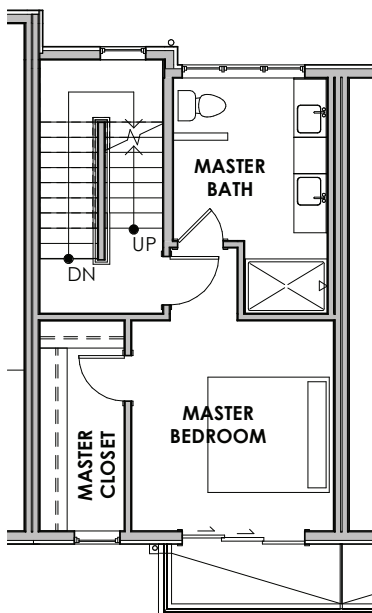
TH2 - LEVEL P1



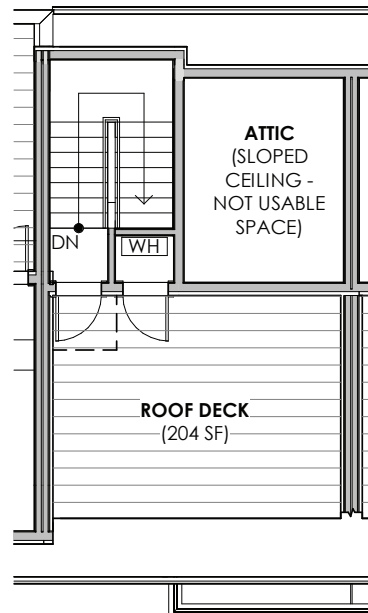
TH2 - LEVEL 1



TH2 - LEVEL 2



TH2 - LEVEL 3



TH2 - ROOF DECK

Seller reserves the right to modify or change plans, specifications, features, and prices without warning. Floor-plans, site plans, maps, and renderings may not be to scale. Interior surveyed square footage may vary from architectural square footage calculations.



OLSEN ANDERSON

Windermere
REAL ESTATE

Jed Kliman | 206-778-7665
jkliman@windermere.com